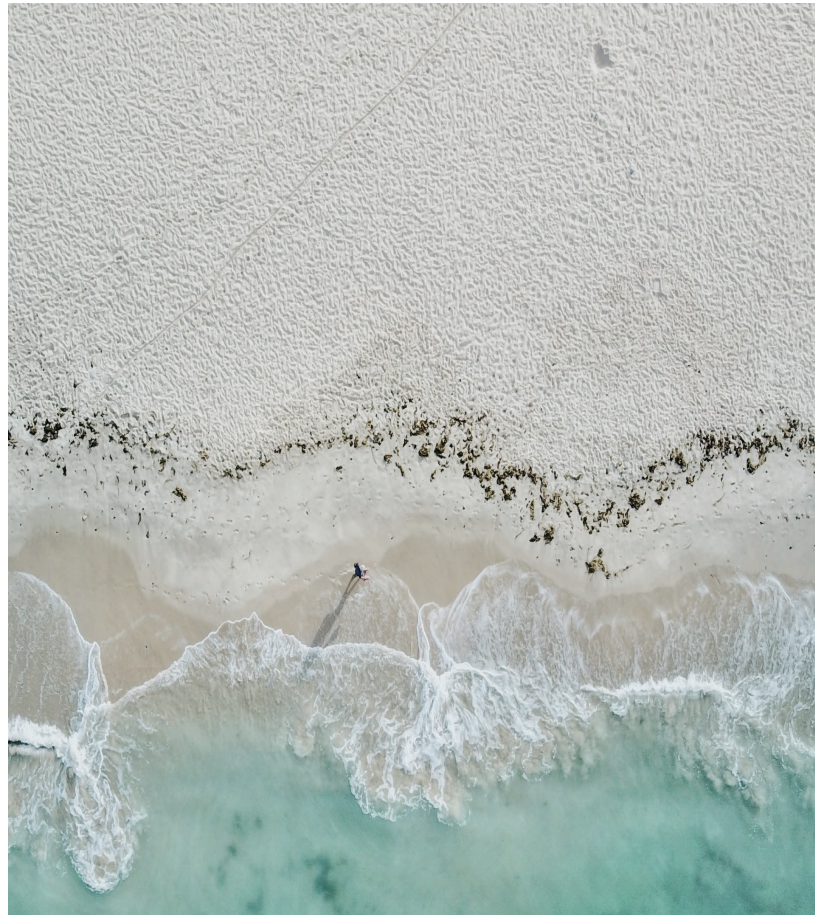


**CASTELLI**

MILANO  
1938

# 01 / Carapace

join the  
upcycling  
revolution











## THE UP-CYCLED PAPER FROM LEATHER RESIDUES

L'unicità della collezione Carapace risiede nell'essere esempio virtuoso di riutilizzo creativo che trae ispirazione dal mondo della moda. La carta cuoio di cui è composta la copertina dona una seconda vita ai sottoprodotti industriali di pelletteria, sostituendo così la pura cellulosa proveniente dagli alberi.

The one-of-a-kind identity of the Carapace collection lies in being a virtuous example of creative reuse that draws inspiration from the world of fashion. The leather paper of the cover gives a second life to the industrial by-products of leather goods, thus replacing the pure cellulose from the trees.

Sostenibile nella sua totalità:  
le pagine dei notebook  
Carapace sono composte al  
100% da fibre riciclate, in carta  
totalmente biodegradabile,  
certificata FSC® e prodotta  
con energia verde.

Sustainable to the core:  
the Carapace Notebook pages  
are made of 100% recycled  
fibres and fully biodegradable  
paper, FSC® certified and crafted  
with green energy.



# making a material difference















La texture del cartoncino di copertina, che lascia trasparire le fibre del cuoio, dà vita ad una sensazione tattile inaspettata e naturale.

A textured cover revealing the fibers of leather, gives life to an unexpected and natural tactile experience.

# surprising tactile effect



## INSPIRING COLOUR PALETTE

La gamma colori della collezione propone tonalità ispirate alla natura, rappresentandone la sua essenza.

La spiccata personalità della palette è arricchita dagli abbinamenti ton-sur-ton che rendono ogni notebook della collezione un oggetto unico.

---

The collection's range of colours offers inspired shades to nature, representing its essence.

The distinctive personality of the palette is enriched by the ton-sur-ton combinations that make each notebook of the collection a unique object.





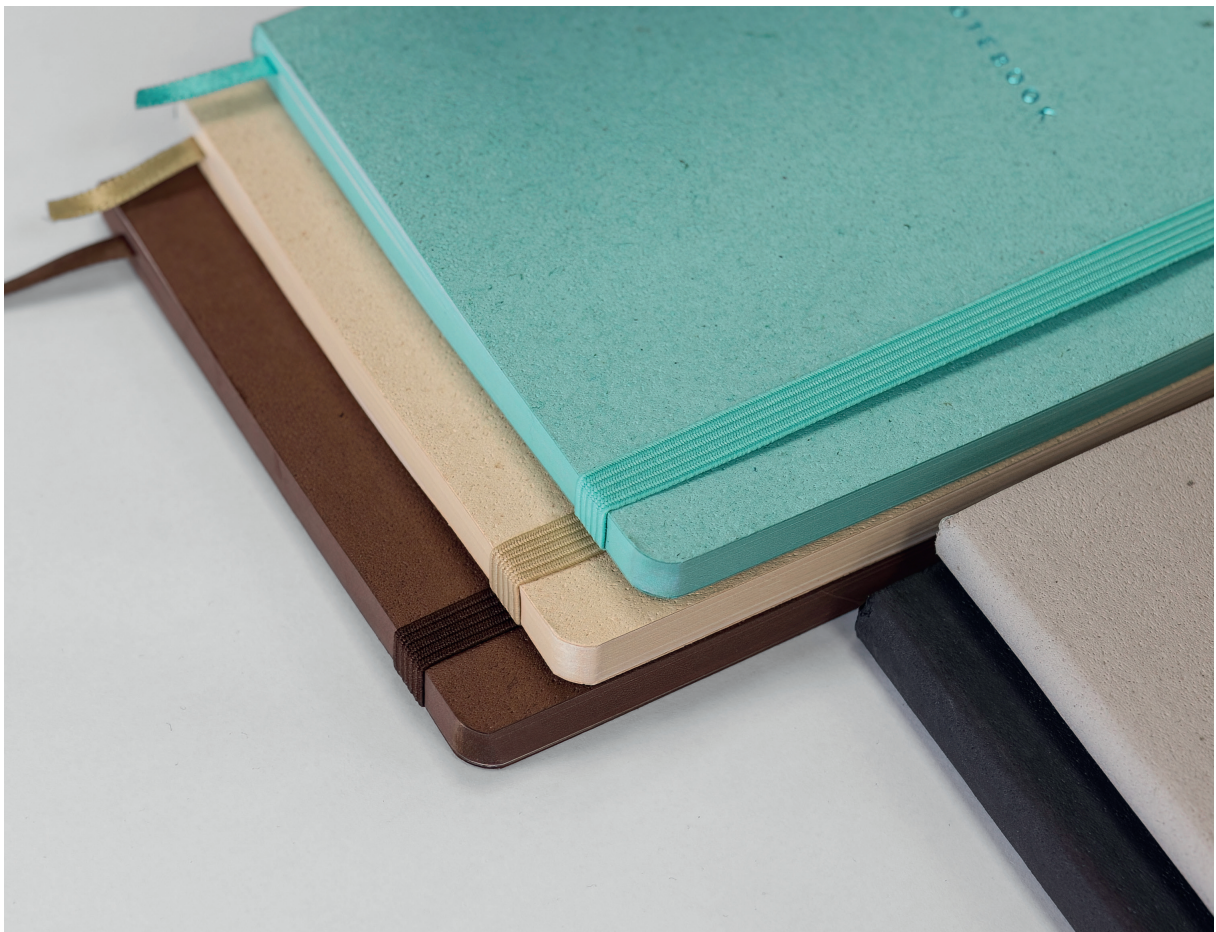
Castelli / The ultimate notebook collection

Lo stile ton-sur-ton della linea trova la propria espressione in due tipologie di notebook: dal rilegato con cucitura Singer, al notebook con elastico e segnalibro. Entrambi hanno taglio all'acqua in tinta. La copertina Carapace è una base perfetta per le personalizzazioni con foil lucido, opaco o metal, o nobilizzazioni in tecnologia digitale.

The tone-on-tone style of this line finds its expression in two types of notebooks: saddle-stitched Notebooks and bound Notebooks with coordinating closure band, bookmark and water-based coloured edges. The Carapace cover is perfect for customizations with glossy, matt or metal foil.

# details and features



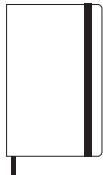


Castelli / The ultimate notebook collection

# Carapace / technical area

## BOUND NOTEBOOK

13x21 cm



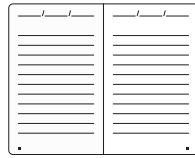
- 80 gsm
- elastic
- ribbon marker
- colour edge



- pages numbered
- numbered index

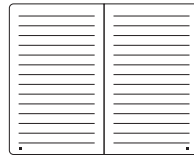
## INSIDE PAGES LAYOUT

Ruled pages  
QG1



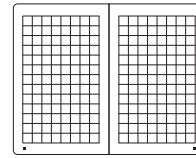
160 pages

Ruled pages  
QG4



192 pages

Squared pages  
QG5



192 pages

19x25 cm

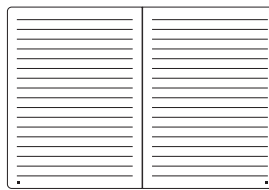


- 80 gsm
- elastic
- ribbon marker
- colour edge



- pages numbered
- numbered index

Ruled pages  
QG7



192 pages

## SADDLE - STITCHED NOTEBOOK

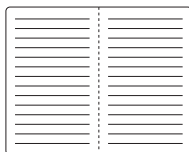
13x21 cm



- 80 gsm
- stitched
- colour edge

## INSIDE PAGES LAYOUT

Ruled pages  
QGS



64 pages



**INSIDE PAGES PAPER CERTIFICATIONS**  
SHIRO ECHO WHITE

Carta riciclata 100% di alta qualità, certificata FSC®

100% recycled, FSC® certified, high quality biodegradable paper.



shiro echo white



**COVERS PAPER CERTIFICATIONS**  
REMAKE CARAPACE

Le copertine di questi taccuini sono realizzati in Remake, un'esclusiva carta "cuoio" che contiene il 25% dei residui di lavorazione del cuoio e della pelletteria in sostituzione della cellulosa. È una carta unica, ecologica, riciclabile e biodegradabile al 100% prodotta con EKOENERGIA.

The covers of these notebooks are made of Remake, an exclusive "leather" paper that contains 25% of the residues of leather and leather goods which replace cellulose. It is a unique paper, ecological, recyclable and 100% biodegradable produced with EKOENERGIA.



# Carapace / technical area

---

## SUGGESTED COVER CUSTOMIZATION OPTIONS

- BLIND EMBOSSING
- THERMO EFFECT BLIND EMBOSSING
- SPECIAL FOIL EFFECT
- OFFSET PRINTING
- DIGITAL PRINT

---

## COVER COLOUR OPTIONS \*



MK-503  
SKY



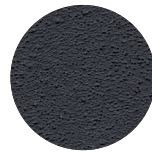
MK-504  
SMOKE



MK-505  
SAND



MK-502  
AUTUMN



MK-501  
MIDNIGHT

\* Cover colour matching with water based colour edges.

---

FSC® C 143836 - [www.FSC.org](http://www.FSC.org)

Castelli Spa si impegna a realizzare i propri prodotti utilizzando materiali provenienti da foreste certificate FSC®, gestite in modo responsabile secondo rigorosi standard ambientali, sociali ed economici.

*Castelli Spa is committed to make its products using materials from FSC® certified responsibly managed forests according to strict environmental, social and economic standards.*